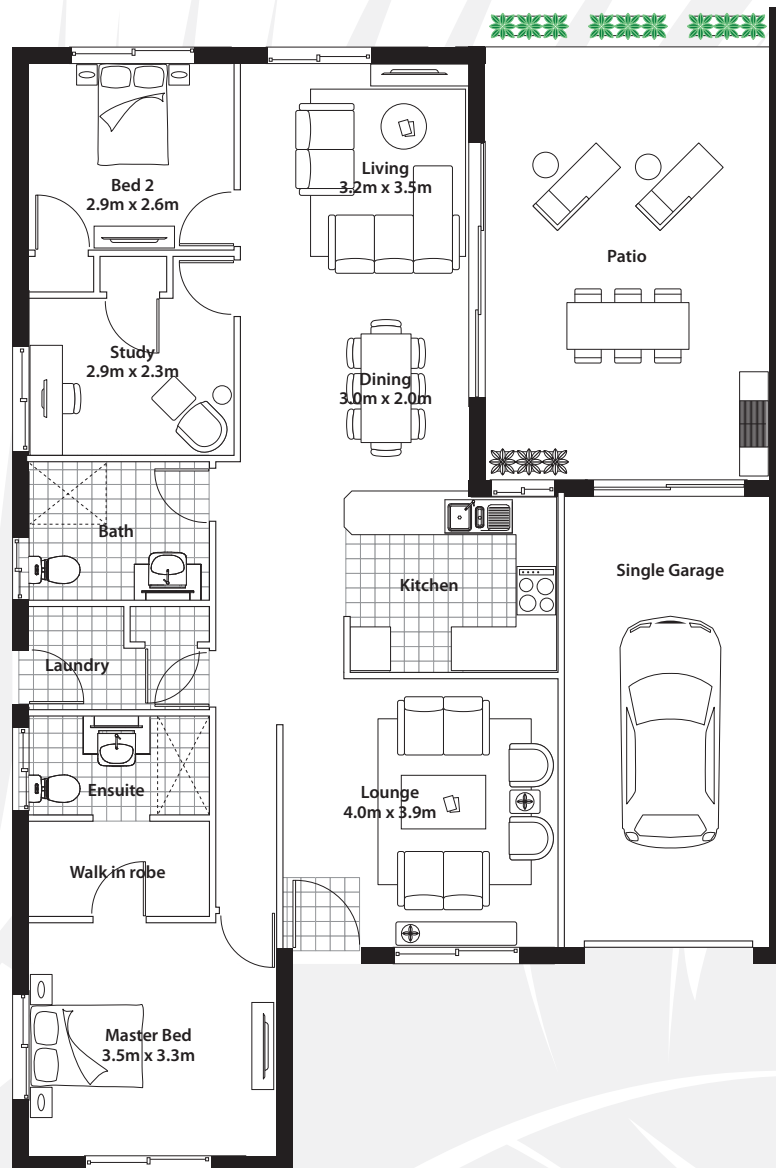


Overview

Size	121sqm
Bedrooms	2
Bathroom	1
Garage	1

Malibu features

- Architect designed with large open spaces, promoting natural ventilation and sunlight to all areas
- Front entry patio with landscaped garden
- Well appointed living / dining area
- Solid brick construction
- Modern laminate kitchen equipped with a pantry, hotplates and oven
- Superior door hardware
- Quality tiling to wet areas, tap fittings and splash back
- Large covered rear patio overlooking private tropical garden
- Second bedroom is large enough to have friends and family come and stay
- Ample storage
- Reverse cycle air conditioning in living / dining area
- Remote controlled garage with direct villa access

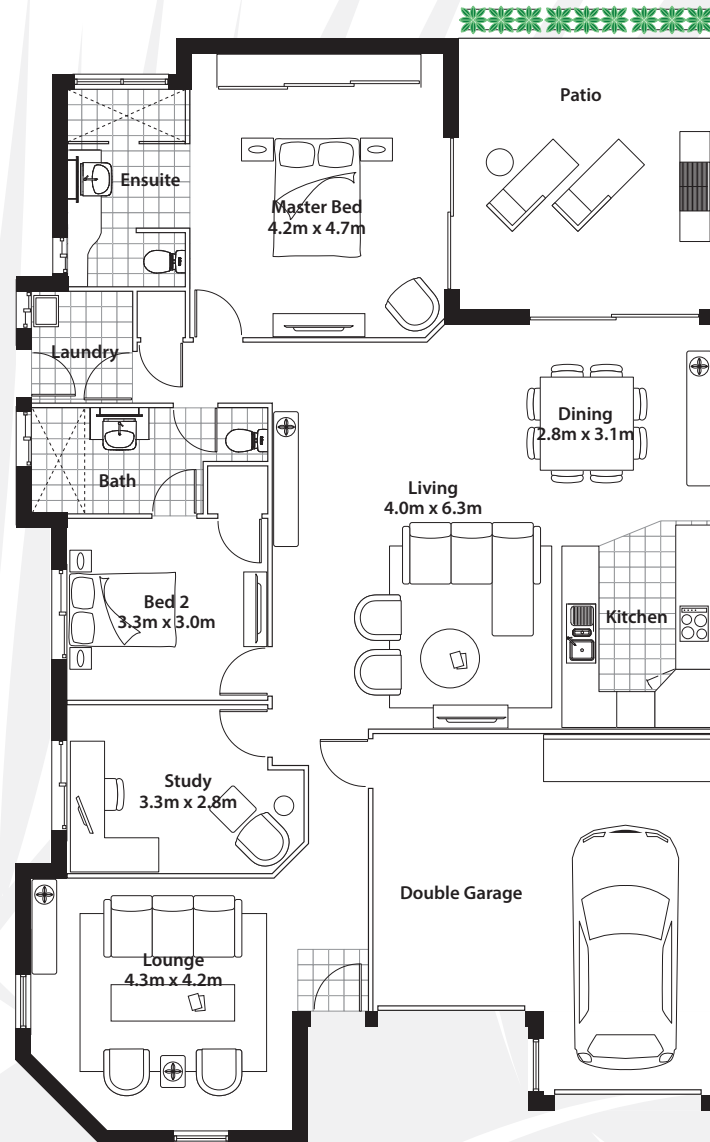


Overview

Size	157sqm
Bedrooms	2 + study
Bathroom	2
Garage	1

Beachwood features

- Architect designed with large open spaces, promoting natural ventilation and sunlight to all areas
- Front entry patio with landscaped garden
- Well appointed living / dining area with separate spacious lounge
- Modern laminate kitchen equipped with a pantry, hotplates and oven
- Superior door hardware
- Quality tiling to wet areas, tap fittings and splash back
- Large covered rear patio overlooking private tropical garden
- Large master bedroom with walk in robe and private ensuite
- Second and third bedrooms large enough to have friends and family come and stay
- Ample storage
- Reverse cycle air conditioning in living / dining area
- Remote controlled garage with direct patio access

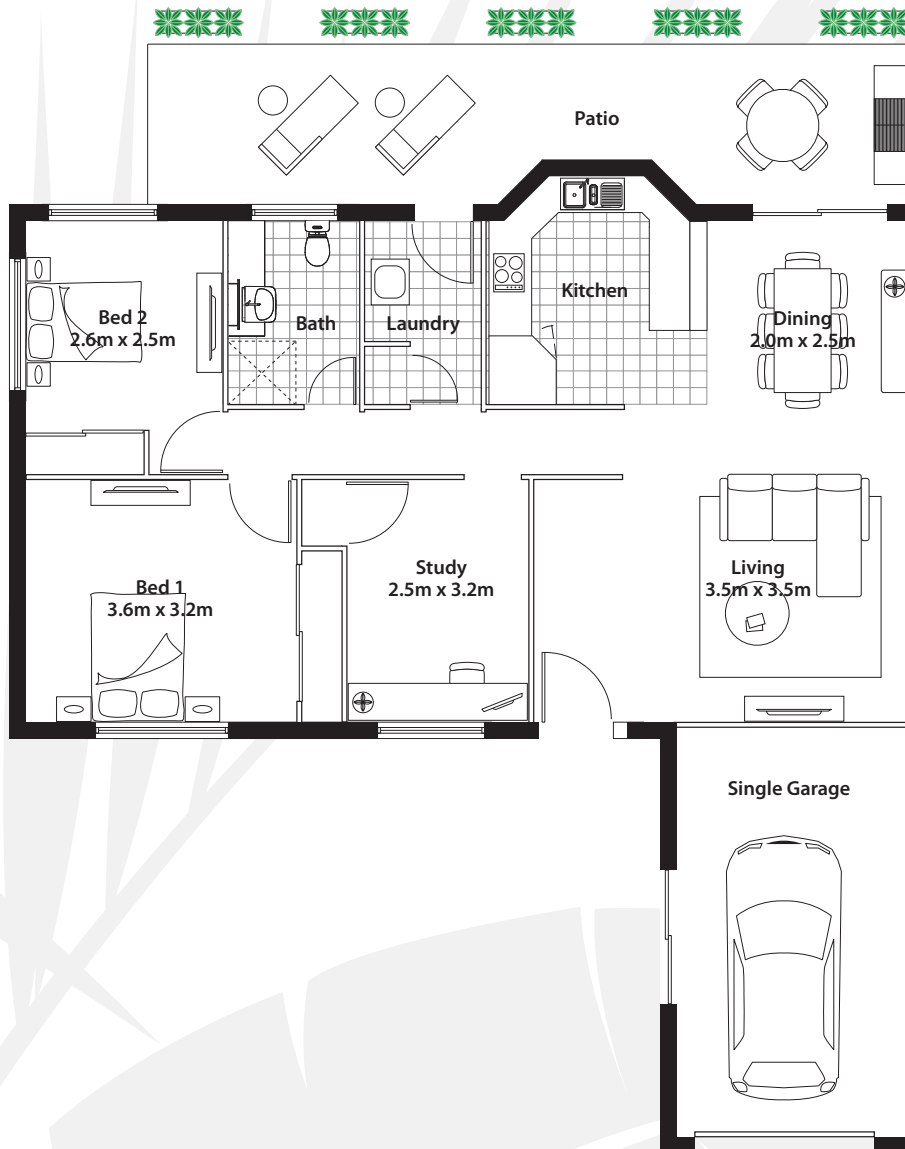


Overview

Size	194sqm
Bedrooms	2 + study
Bathroom	2
Garage	2

Maui features

- Architect designed with large open spaces, promoting natural ventilation and sunlight to all areas
- Covered front entry patio with landscaped garden
- Well appointed living / dining area with separate spacious lounge
- Superb gourmet kitchen with granite bench tops, stainless steel dishwasher, wall oven, hotplate and range hood complimented by two-pack finish to joinery
- Superior door hardware
- Quality tiling to wet areas, tap fittings and splash back
- Large covered rear patio overlooking private tropical garden
- Large master bedroom with private ensuite
- Second and third bedrooms large enough to have friends and family come and stay
- Ample storage
- Reverse cycle air conditioning in living / dining area
- Remote controlled double garage with direct villa access

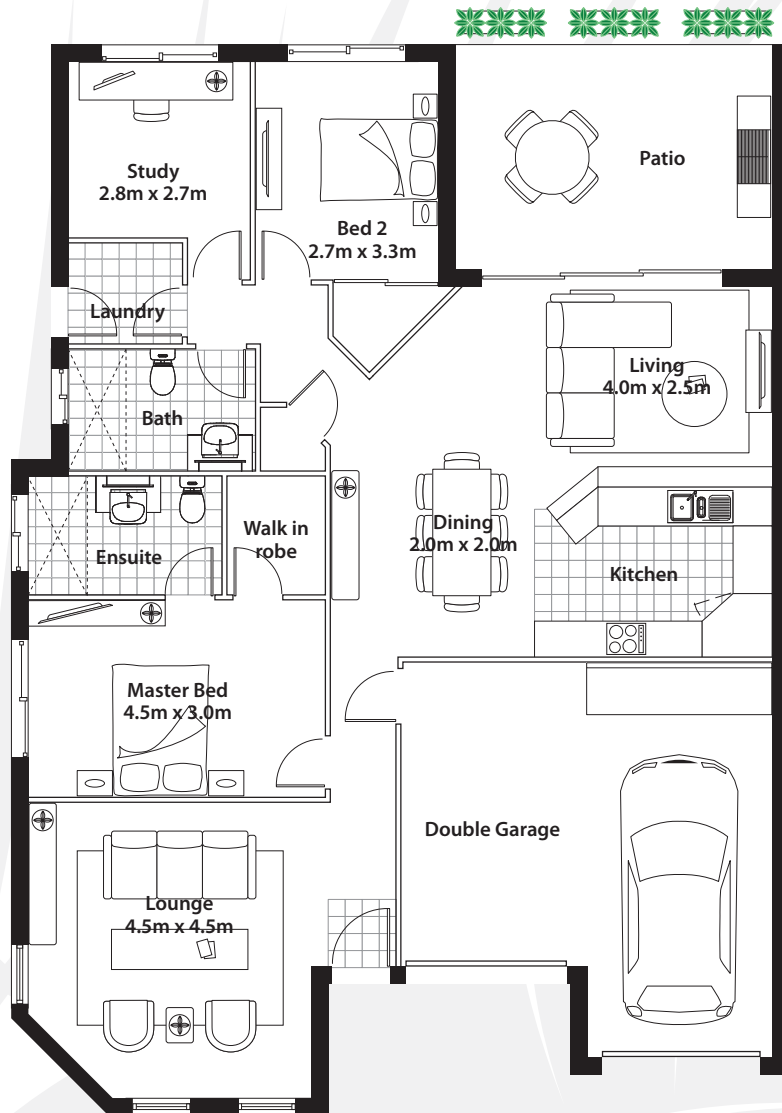


Overview

Size	133sqm
Bedrooms	2 + study
Bathroom	1
Garage	1

Nautilus features

- Architect designed with large open spaces, promoting natural ventilation and sunlight to all areas
- Front entry patio with landscaped garden
- Well appointed living / dining area
- Solid brick construction
- Modern laminate kitchen equipped with a pantry, hotplates and oven
- Superior door hardware
- Quality tiling to wet areas, tap fittings and splash back
- Large covered rear patio overlooking private tropical garden
- Ample storage
- Reverse cycle air conditioning in living / dining area
- Remote controlled garage

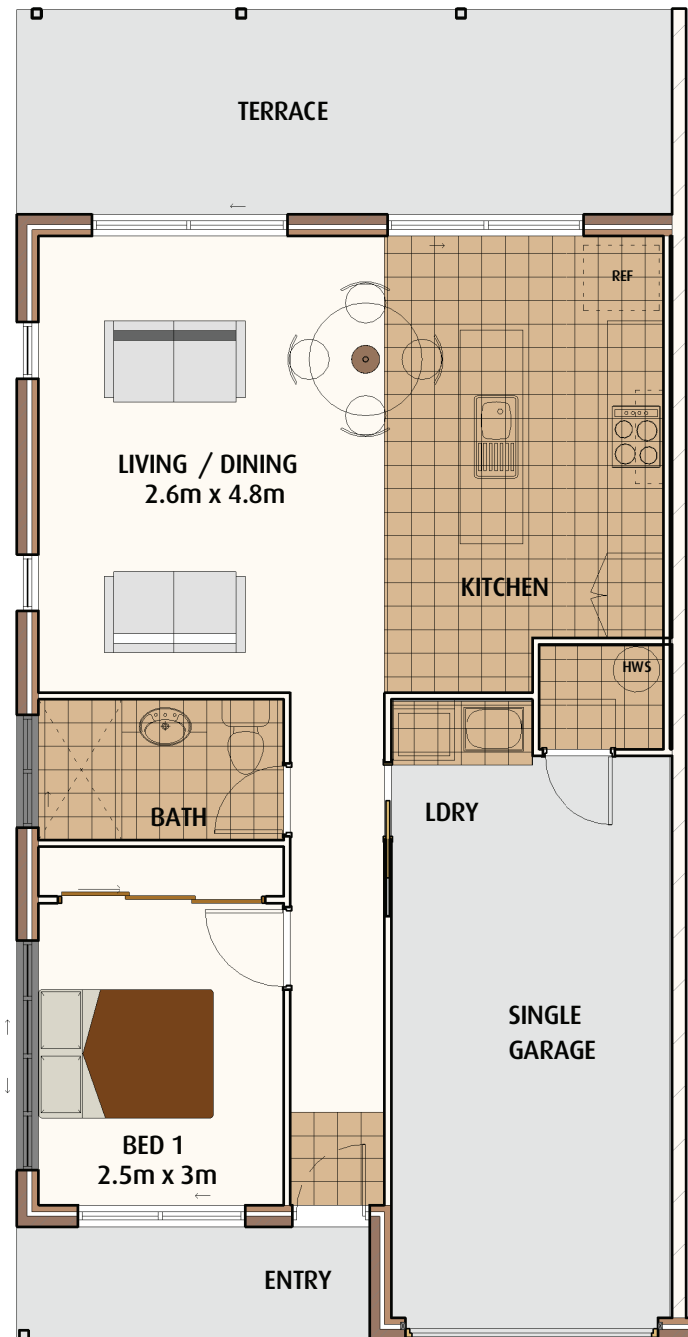


Overview

Size	172sqm
Bedrooms	2 + study
Bathroom	2
Garage	2

Oceanic features

- Architect designed with large open spaces, promoting natural ventilation and sunlight to all areas
- Covered front entry patio with landscaped garden
- Well appointed living / dining area with separate spacious lounge
- Superb gourmet kitchen with granite bench tops, stainless steel dishwasher, wall oven, hotplate and range hood complimented by two-pack finish to joinery
- Superior door hardware
- Quality tiling to wet areas, tap fittings and splash back
- Large covered rear patio overlooking private tropical garden
- Large master bedroom with walk in robe and private ensuite
- Second bedroom is large enough to have friends and family come and stay
- Ample storage
- Reverse cycle air conditioning in living / dining area
- Remote controlled double garage with direct villa access



Aloha overview

- 93sqm
- single storey
- 1 bedroom
- combined lounge and dining areas
- single lockup garage
- covered terrace area

Aloha features

- architecturally designed with compact open spaces ensuring natural breezes and sunlight to all areas
- covered front entry patio overlooking landscaped streetscape
- solid brick construction
- well appointed modern laminate kitchen with island bench, pantry, under bench oven and separate hotplates

- large bathroom
- quality tiling to wet areas and splash backs
- large sliding doors lead out to covered rear terrace area overlooking private tropical garden
- ample storage space